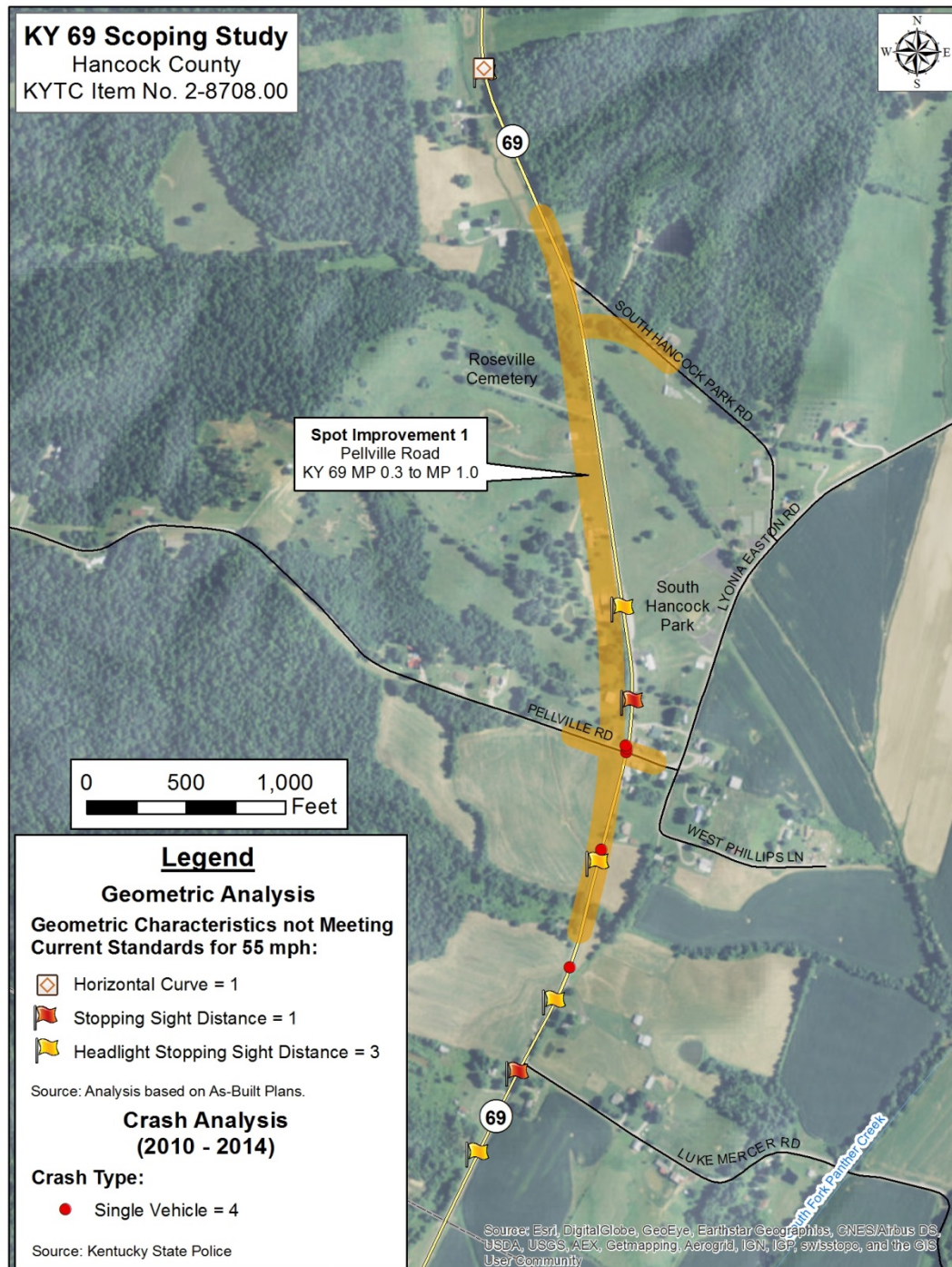


Appendix H – PROJECT SHEETS

Spot Improvement 1: Pellville Road

This concept improves the existing roadway geometry to 55 mph along KY 69 near Pellville Road.

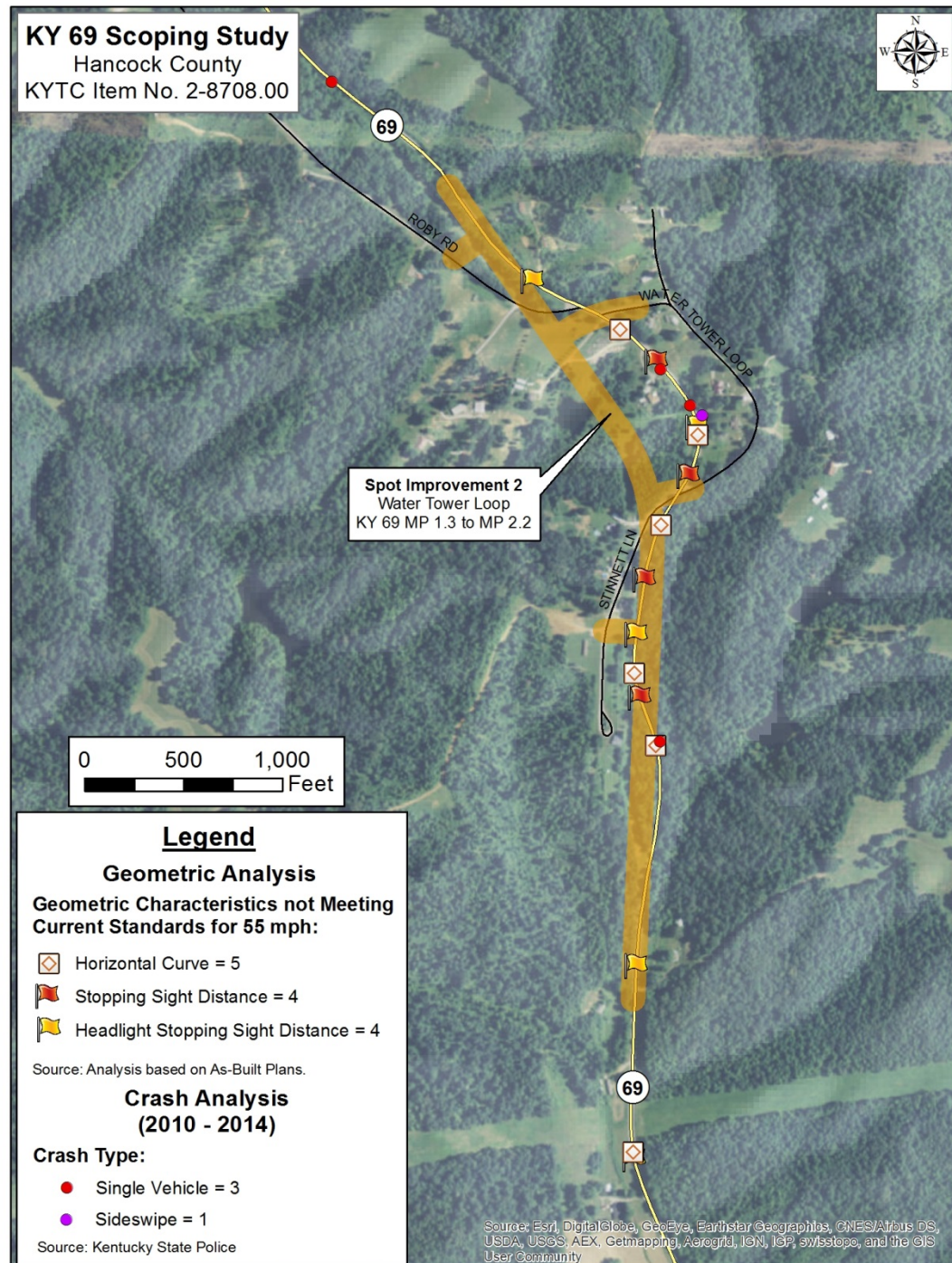
- Length: 0.7 mile
- Crash History: 4 Crashes
1 injury and 3 PDO
- Roadway Geometry:
3 Deficient VC's
- 2015 Cost Estimate:
Design - \$0.6 million
ROW - \$1.0 million
Utility - \$0.4 million
Construction – \$3.9 million
- Potential Relocations:
1 Business, 2 Homes,
4 Barns
- Recommendation:
Low Priority



Spot Improvement 2: Water Tower Loop Rd

This concept improves the existing roadway geometry to 55 mph along KY 69 near Water Tower Loop.

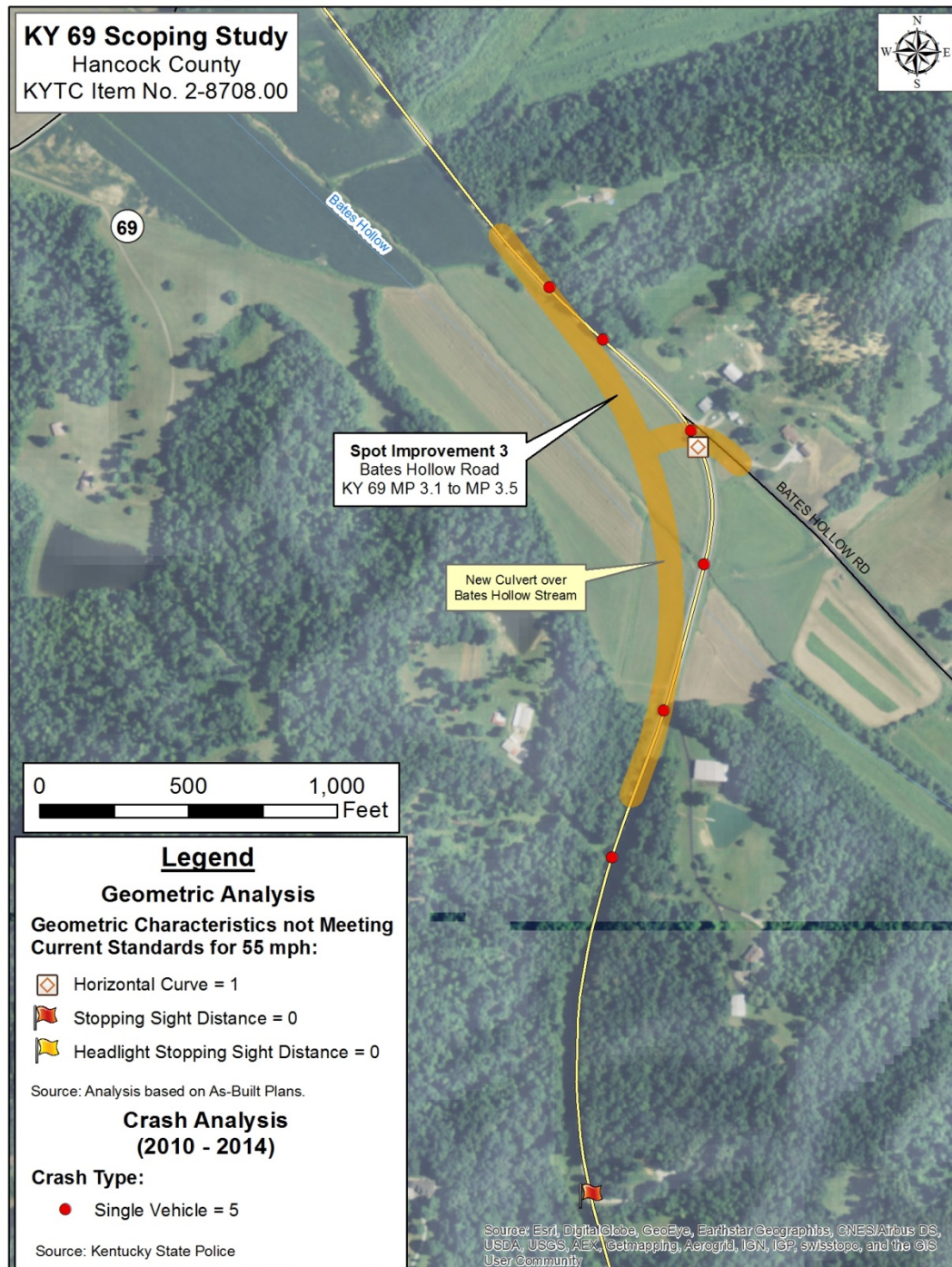
- Length: 0.9 mile
- Crash History: 4 Crashes
2 injury and 2 PDO
- Roadway Geometry:
8 Deficient VC's
5 Deficient HC's
- 2015 Cost Estimate:
Design - \$0.8 million
ROW - \$1.0 million
Utility - \$0.4 million
Construction – \$5.5 million
- Potential Relocations:
1 Home
- Recommendation:
3rd Priority



Spot Improvement 3: Bates Hollow Road

This concept improves the existing horizontal curve to 55 mph along KY 69 near Bates Hollow Road.

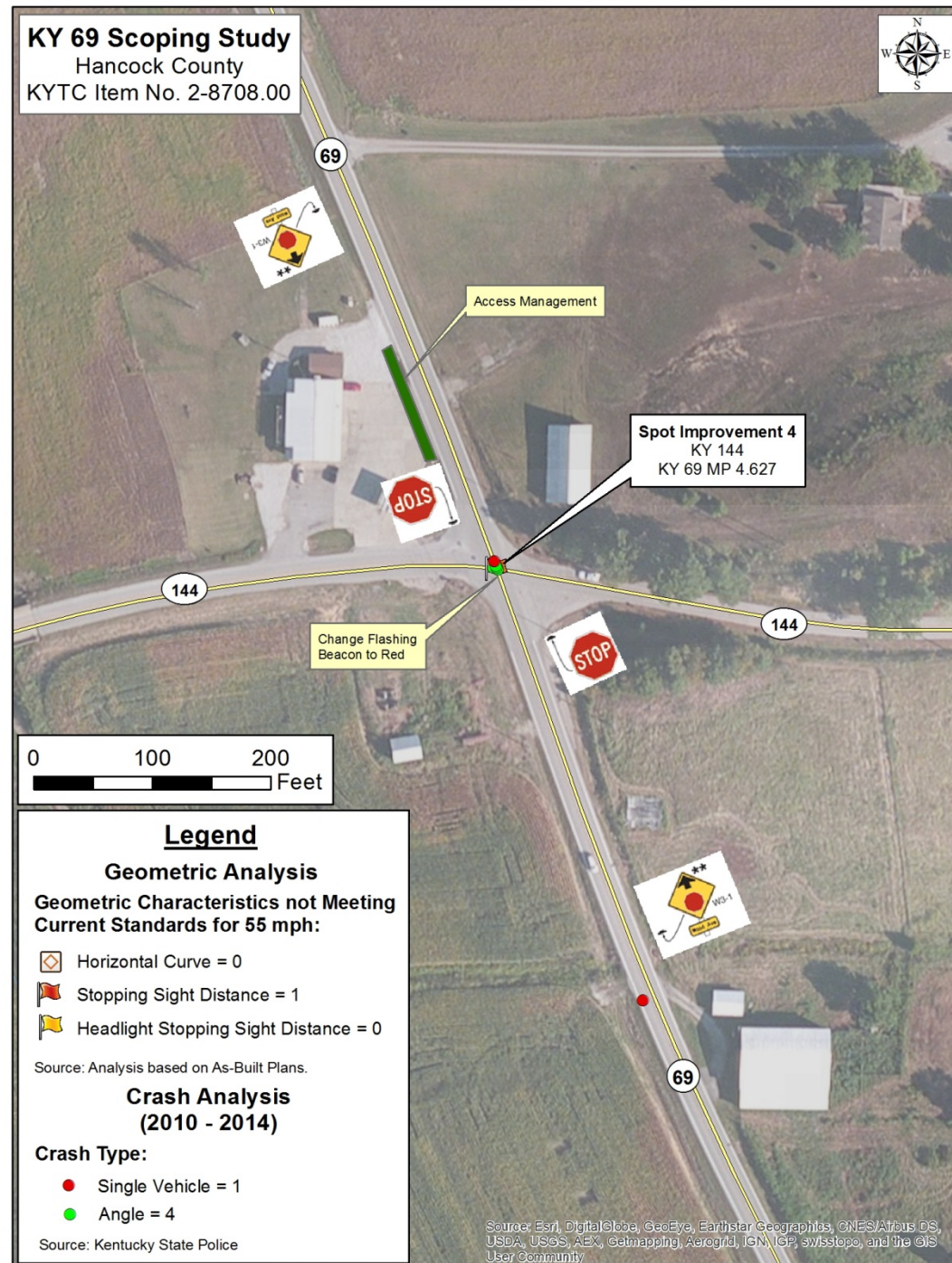
- Length: 0.4 mile
- Crash History: 5 Crashes
3 injury and 2 PDO
- Roadway Geometry:
1 Deficient HC
- 2015 Cost Estimate:
Design - \$0.4 million
ROW - \$0.5 million
Utility - \$0.4 million
Construction – \$2.9 million
- Potential Relocations: 0
- Recommendation:
Medium Priority



Spot Improvement 4: KY 144 Intersection

Convert the intersection at KY 69 and KY 144 to a four-way stop. Provide advance warning signage along KY 69 and access management at the gas station.

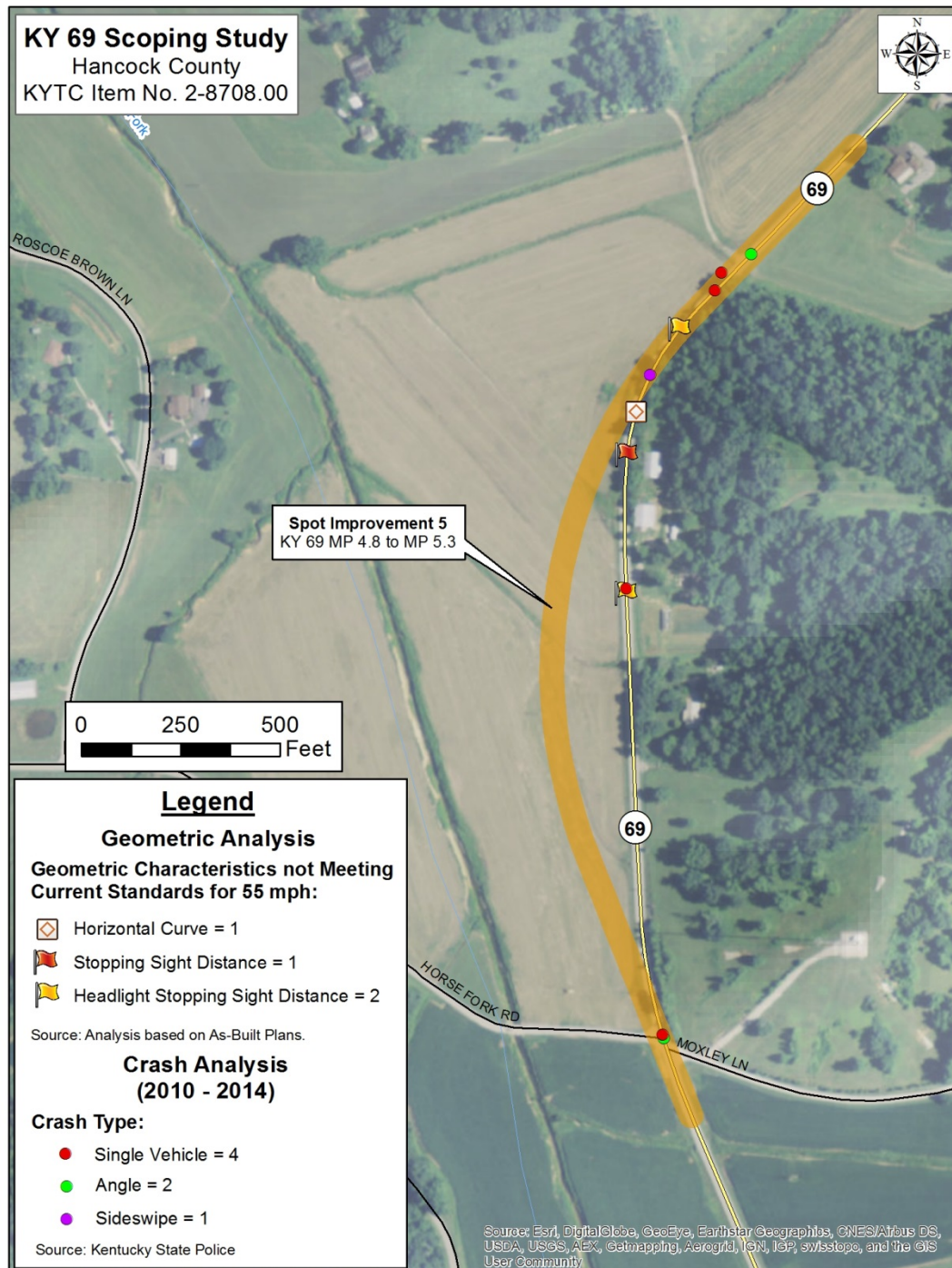
- Crash History: 5 Crashes
1 injury and 4 PDO
- Roadway Geometry: 1 Deficient VC
- 2015 Cost Estimate:
Design - \$20,000
ROW - \$50,000
Utility - \$50,000
Construction – \$30,000
- Potential Relocations: 0
- Recommendation:
Low Priority



Spot Improvement 5: Moxley Lane

This concept improves the existing horizontal curve to 55 mph along KY 69 North of Moxley Lane.

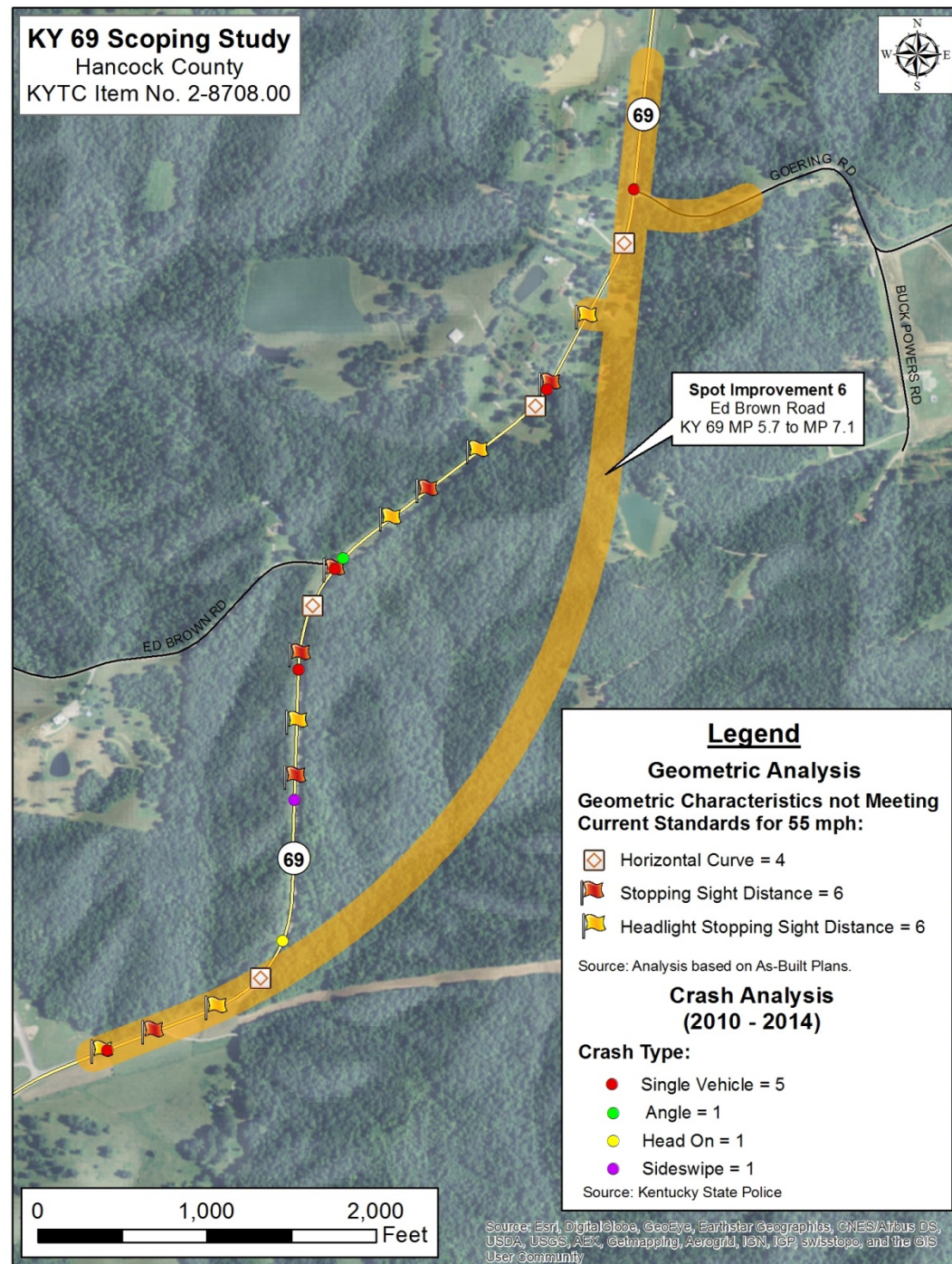
- Length: 0.5 mile
- Crash History: 7 Crashes
5 injury and 2 PDO
- Roadway Geometry:
3 Deficient VC's
1 Deficient HC
- 2015 Cost Estimate:
Design - \$0.4 million
ROW - \$0.5 million
Utility - \$0.4 million
Construction – \$1.8 million
- Potential Relocations: 0
- Recommendation:
Medium Priority



Spot Improvement 6: Ed Brown Road

This concept improves the existing roadway geometry to 55 mph and adds northbound and southbound passing lanes along KY 69 near Ed Brown Road.

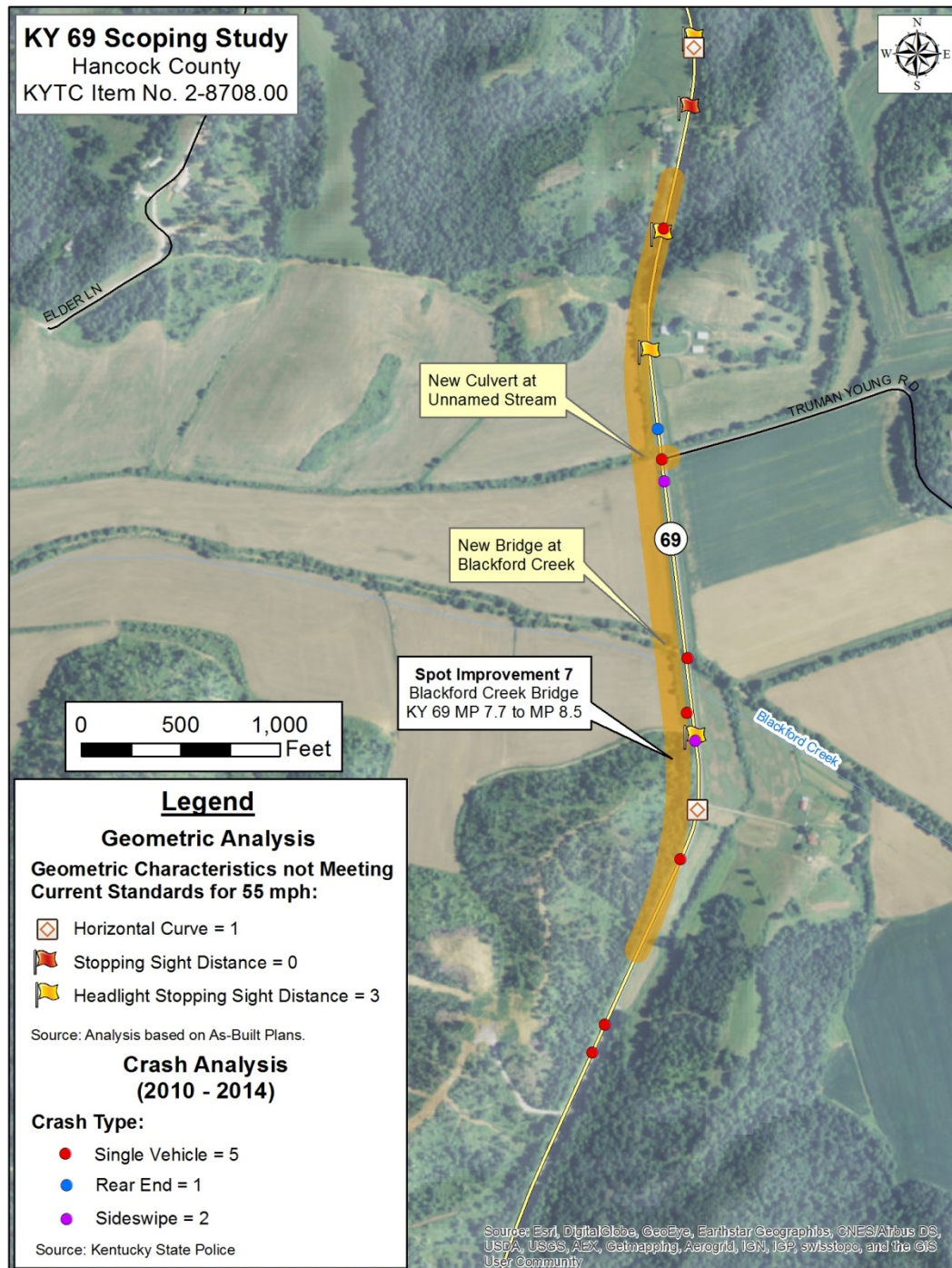
- Length: 1.4 mile
- Crash History: 8 Crashes
3 injury and 5 PDO
- Roadway Geometry:
12 Deficient VC's
4 Deficient HC
- 2015 Cost Estimate:
Design - \$1.0 million
ROW - \$1.5 million
Utility - \$0.4 million
Construction – \$6.6 million
- Potential Relocations:
2 Homes
- Recommendation:
Medium Priority



Spot Improvement 7: Blackford Creek

This concept replaces the functionally obsolete bridge at Blackford Creek and the culvert adjacent to Truman Young Road.

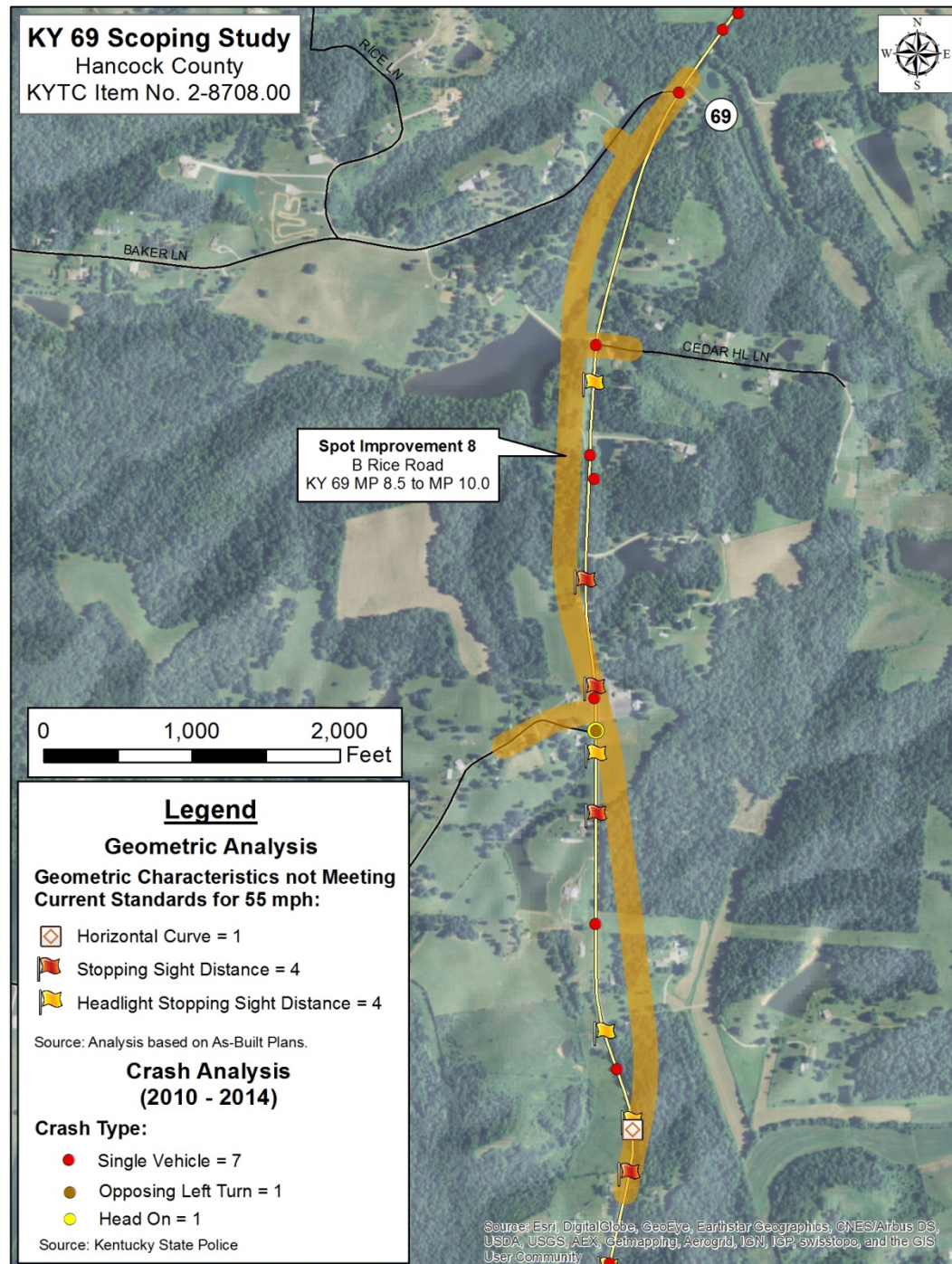
- Length: 0.8 mile
- Crash History: 8 Crashes
5 injury and 3 PDO
- Blackford Creek Bridge:
SR = 59.7, FO
- Roadway Geometry:
3 Deficient VC's
1 Deficient HC
- 2015 Cost Estimate:
Design - \$0.6 million
ROW - \$0.5 million
Utility - \$0.4 million
Construction - \$4.1 million
- Potential Relocations: 0
- Recommendation:
4th Priority



Spot Improvement 8: B Rice Road

This concept improves the existing roadway geometry to 55 mph along KY 69 near B Rice Road.

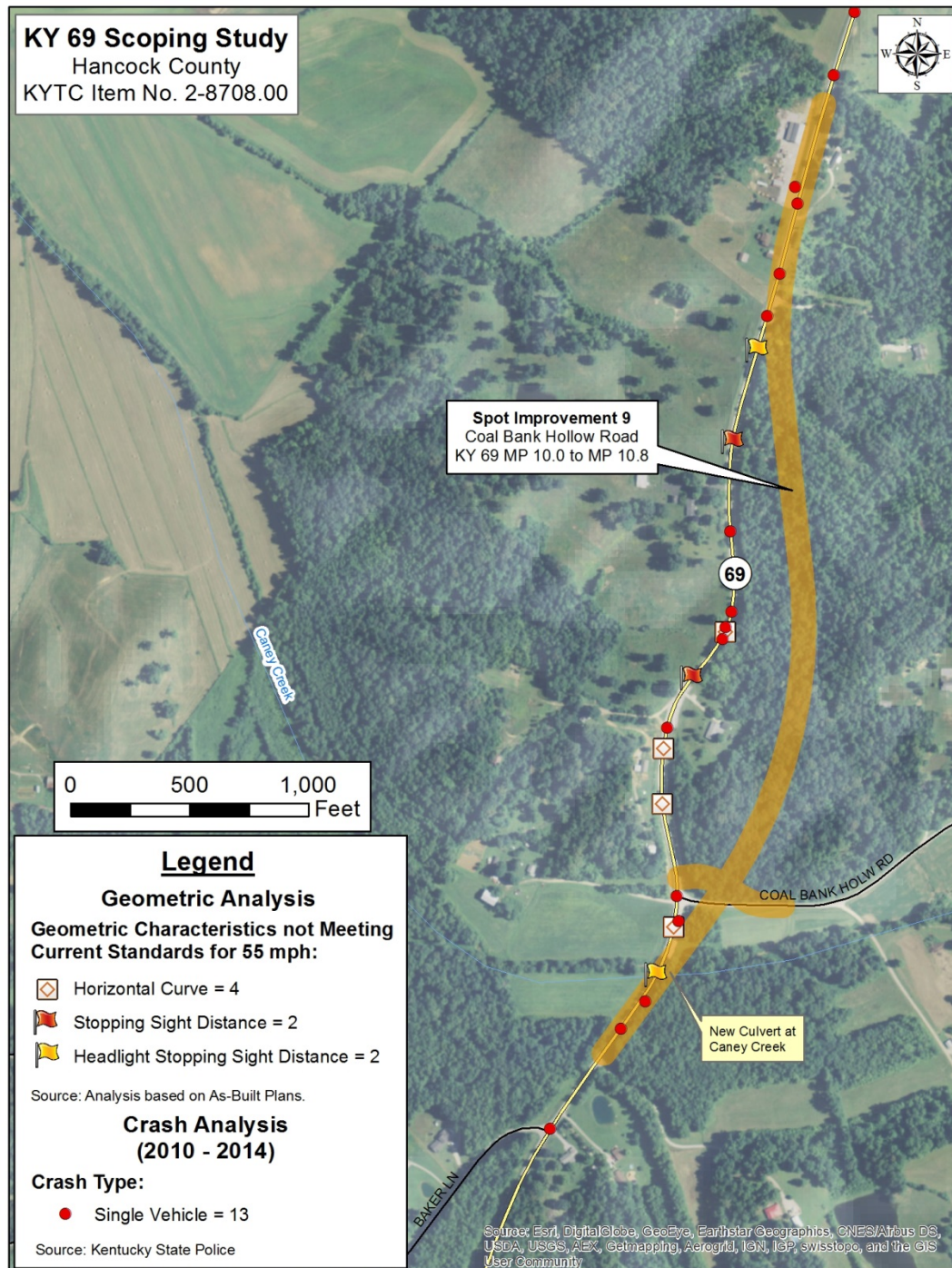
- Length: 1.5 mile
- Crash History: 9 Crashes
3 injury, 6 PDO
- Roadway Geometry:
8 Deficient VC's
1 Deficient HC's
- 2015 Cost Estimate:
Design - \$0.9 million
ROW - \$1.5 million
Utility - \$0.4 million
Construction - \$6.2 million
- Potential Relocations: 3
Homes
- Recommendation:
Low Priority



Spot Improvement 9: Coal Bank Hollow

This concept improves the existing roadway geometry to 55 mph along KY 69 near Coal Bank Hollow Road and replaces the structurally deficient culvert at Caney Creek.

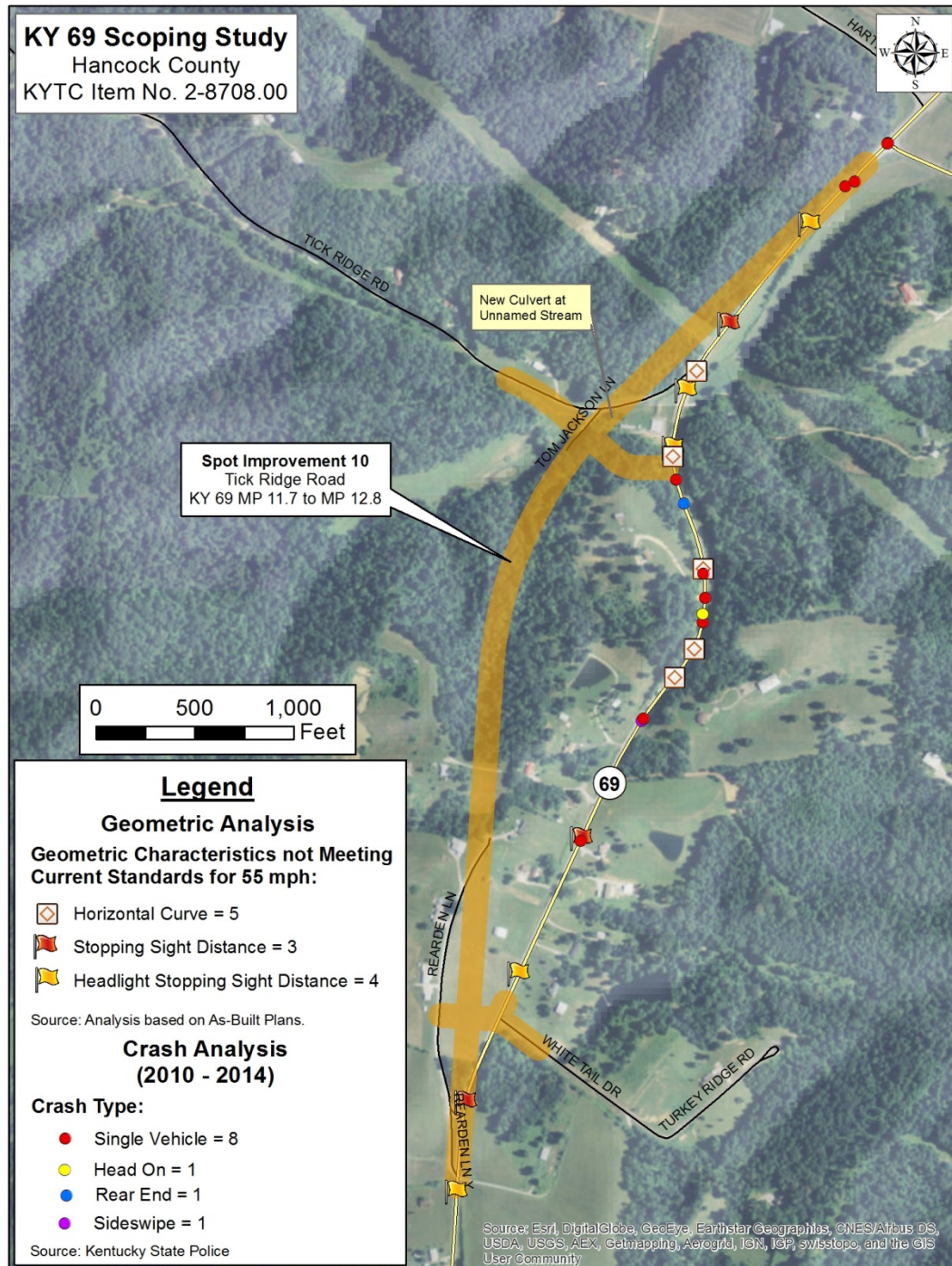
- Length: 0.8 mile
- Crash History: 13 Crashes
1 Fatal, 4 injury, 8 PDO
- Roadway Geometry:
4 Deficient VC's
4 Deficient HC's
- Caney Creek Culvert:
SR = 33.8, SD
- 2015 Cost Estimate:
Design - \$0.6 million
ROW - \$1.0 million
Utility - \$0.4 million
Construction - \$4.2 million
- Potential Relocations: 1 Home
- Recommendation:
2nd Priority



Spot Improvement 10: Tick Ridge Road

This concept improves the existing roadway alignment to 55 mph along KY 69 near Tick Ridge Road.

- Length: 1.1 mile
- Crash History: 11 Crashes
1 fatal, 3 injury, 7 PDO
- Roadway Geometry:
7 Deficient VC's
5 Deficient HC's
- 2015 Cost Estimate:
Design - \$0.7 million
ROW - \$2.0 million
Utility - \$0.4 million
Construction - \$4.8 million
- Potential Relocations:
4 Homes
- Recommendation:
1st Priority



Complete Reconstruction Alternative

This concept widens KY 69 and improves the existing roadway alignment to 55 mph from the Ohio County Line to KY 1265 (Happy Hollow Road).

- Length (MP 0.0 – MP 12.8): 12.8 miles
- 2015 Cost Estimate:
 - Design - \$5.3 million
 - ROW - \$15.0 million
 - Utility - \$5.0 million
 - Construction – \$52.6 million
- Recommendation:
No Priority

